



INTRODUCING SUPPLY TRACE

10th April 2024



Introducing



SUPPLY
TRACE

What We Will Cover Today

- ❖ Background to Supply Trace: Why We Built This
- ❖ Introduction to Supply Trace
- ❖ Our Research Process
- ❖ Live Demo
- ❖ Plans for the Future
- ❖ Q&A

Background: Why We Built This

1. The world is missing all of the following:
 - An **open access** platform tracking forced labor
 - A platform **built by experts** on forced labor
 - A **non-neutral** trade platform for the public good.
2. Increasing legislation and transparency in supply chains requires **capacity** on a preserved **historical record**.
3. Using machine learning to save your time in identifying risk, **we empower** everyone: *trade experts, governments, CSOs, human rights defenders, lawyers, auditors, advocates, and corporations* to collaboratively challenge responsible entities to remedy forced labor throughout their supply chains.

What is Supply Trace?



An open platform

Supply Trace is an accessible, open platform that exposes potential risks in global supply chains.



Pilot phase

In its pilot phase, it focuses on the apparel sector and links between forced labor in the Uyghur Region of China and shipments to the US.



Base layer of trade data

Supply Trace is populated with customs records, such as shipping and bill of lading data, and other publicly available supply chain information.



Deep subject matter expertise

Additional intelligence, derived from desk-based research, is layered over the core supply chain data.



Built for scale

In the future, Supply Trace will progressively expand to other industries, affected regions and categories of risk.

Supply Trace Currently Shows:



COMPANIES

1.5
MILLION



RELATIONSHIPS

2.3
MILLION



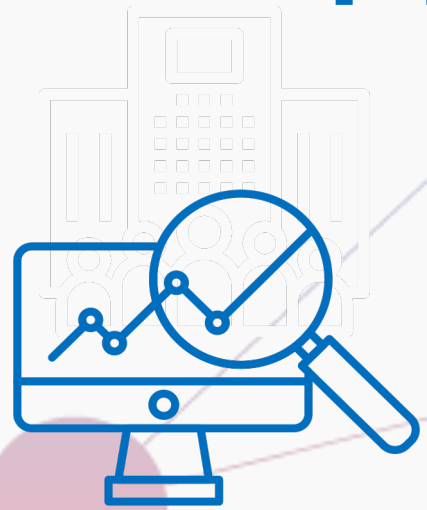
TRANSACTIONS

2.6
MILLION



Diving Deeper

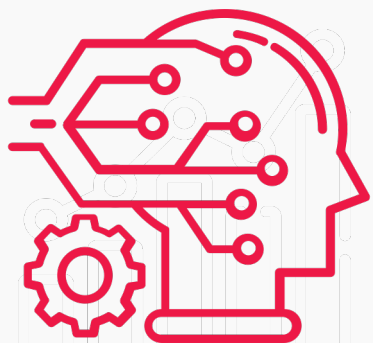
Our USP: Machine Learning + Expert Research



Machine learning on global supply chain trade data



Human intelligence for critical expertise on risk

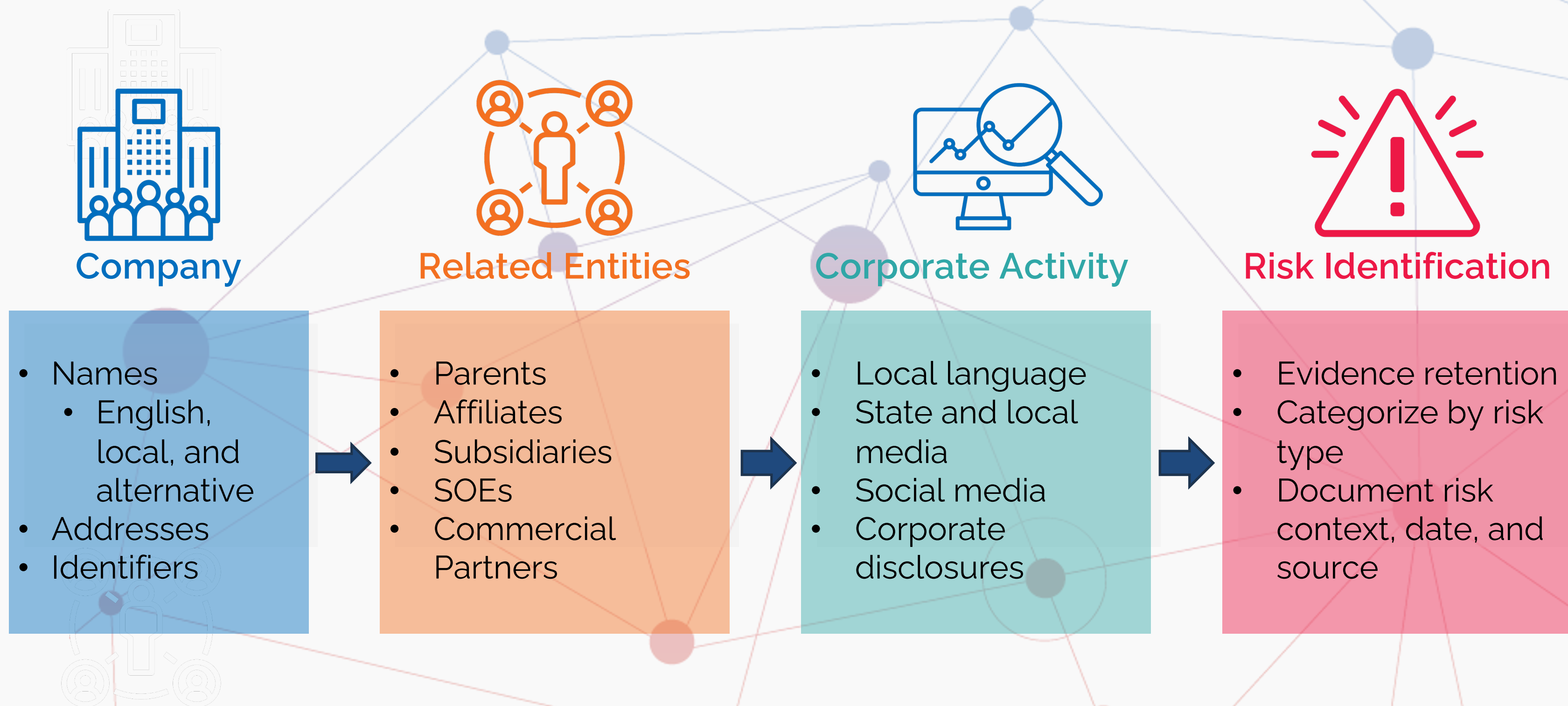


Automation of previously manual, time-consuming research work



The Research Process

The Research Process



For more detailed guidance, see Sheffield Hallam University's evidence brief, "[Know Your Supply Chains: Desk-Based Research Strategies to Identify Uyghur Region Exposure](#)" (June 2023).



Demo

<https://supplytrace.org>



What Next?

We asked live:

Which sectors would you like to see in Supply Trace next?

The Results:



We asked live:

Which geographies would you like to see in Supply Trace next?

The Results:





SUPPLY TRACE

Q&A



SUPPLY TRACE

Stay in Touch

CONTACT US

For further information, please contact



s.bhimani@northeastern.edu



c.t.dale@shu.ac.uk



ka.shaw@northeastern.edu

Follow Our Progress



<https://bit.ly/supply-trace-subscribe>



<https://www.linkedin.com/company/supplytrace/>

Thank You!